



2017

# THE ALMOND CONFERENCE

COMMON ERRORS IN ORCHARD SET UP

Room 308-309 | December 5 2017



# CEUs – New Process

## Certified Crop Advisor (CCA)

- Sign in and out of each session you attend.
- Pickup verification sheet at conclusion of each session.
- *Repeat this process for each session, and each day you wish to receive credits.*

## Pest Control Advisor (PCA), Qualified Applicator (QA), Private Applicator (PA)

- Pickup scantron at the start of the day at first session you attend; complete form.
- Sign in and out of each session you attend.
- Pickup verification sheet at conclusion of each session.
- Turn in your scantron at the end of the day at the last session you attend.

*Sign in sheets and verification sheets are located at the back of each session room.*

# AGENDA

- **Spencer Cooper**, Almond Board of California, moderator
- **Mae Culumber**, UCCE-Merced County
- **Franklin Gaudi**, Irrigation Training & Research Center
- **Roger Duncan**, UC Cooperative Extension, Stanislaus County



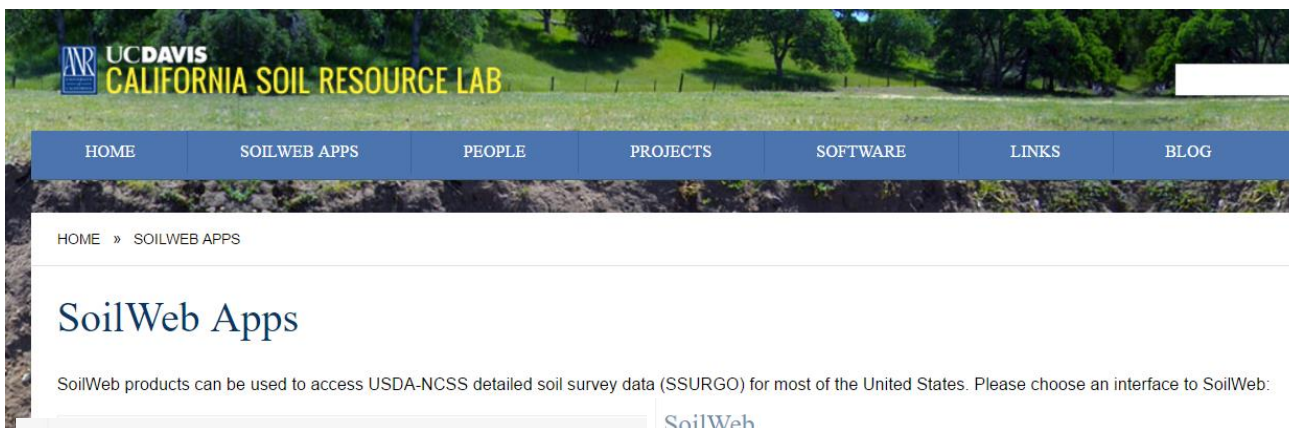
A close-up photograph of several green almond buds on a branch, surrounded by vibrant green leaves. The buds are in various stages of development, some showing the characteristic pointed shape of almond buds. The background is softly blurred, emphasizing the texture and color of the buds and leaves.

# Pre-plant Almond Orchard Site Evaluation and Modification

Mae Culumber, Ph.D.  
Advisor in Cooperative Extension  
Fresno County

# Site Evaluation: Soil Surveys

- Soil type and distribution
- Drainage
- Flood potential
- Soil salinity levels ( $\text{Na}^+$ ,  $\text{Cl}^-$ , and B)



## SoilWeb Apps

SoilWeb products can be used to access USDA-NCSS detailed soil survey data (SSURGO) for most of the United States. Please choose an interface to SoilWeb:

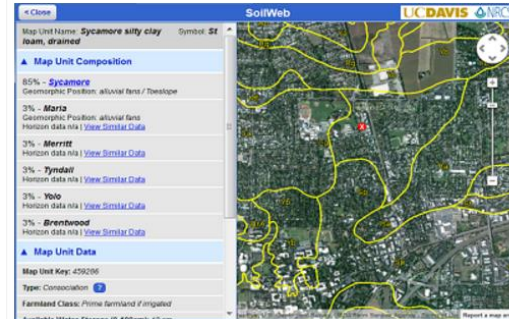
### [Soil Properties App](#)



This app allows users to explore a variety of soil properties in map form.

### [SoilWeb](#)

Explore soil survey areas using an interactive Google map. View detailed information about map units and their components. This app runs in your web browser and is compatible with desktop computers, tablets, and smartphones.

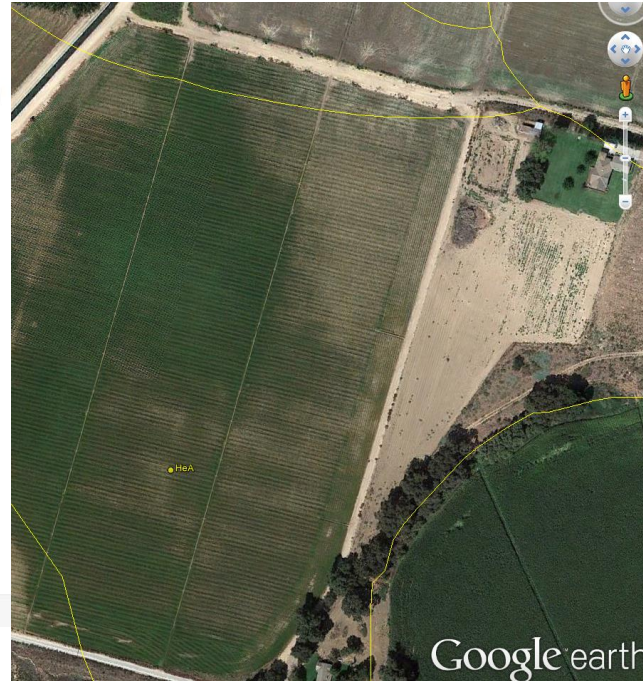
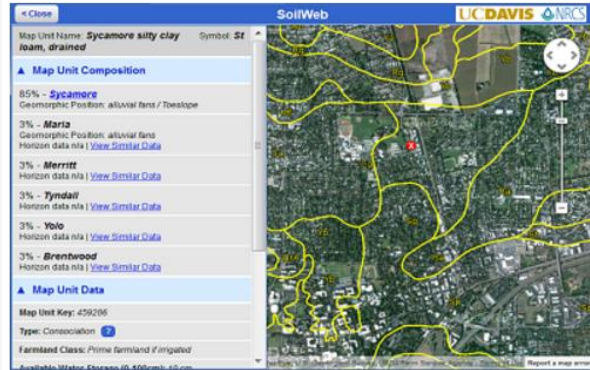


<https://casoilresource.lawr.ucdavis.edu/soilweb-apps/>

# Site Evaluation: Soil Differences

## SoilWeb

Explore soil survey areas using an interactive Google map. View detailed information about map units and their components. This app runs in your web browser and is compatible with desktop computers, tablets, and smartphones.



Soil Map: NRCS, Google Earth, etc.

# Check with a Backhoe

Start with soil survey

- Dig holes (5'-6' deep) where maps show differences
- Look for:
  - stratified and compacted layers
  - pull soil samples for analysis and nematodes



# Soil Sampling

## Soil Analysis

- Objective: Determine suitability for planting
- Sample equal depths down to 5 feet (12" or 18" increments)
- Within CA, labs generally analyze soil-water extract for water soluble salinity, which generally is sufficient

## Plant Parasitic Nematodes

- Objective: Determine the presence of plant parasitic nematodes
- Assists in rootstock selection and fumigation requirements
- Sample the top profile of the soil, usually between 6"-12" from multiple sites

# Interpreting a Soil Sample – Typical Soil Profile

Depth	pH	EC (dS/m)	Ca (meq/l)	Mg (meq/l)	Na (meq/l)	Cl (meq/l)	SAR	B (mg/l)	Sat %
0-12"	6.64	1.10	4.16	3.51	3.91	1.91	2.00	0.30	47.07
13-24"	6.74	1.11	3.99	3.51	4.27	2.09	2.21	0.45	48.68
25-36"	7.04	1.01	4.02	3.66	3.17	2.61	1.62	0.80	50.08
37-48"	6.99	1.18	5.10	4.84	2.47	3.36	1.11	0.30	53.28
49-60"	7.49	1.38	2.95	3.54	2.42	1.95	1.34	0.69	56.77
AVG	6.98	1.16					1.66	0.508	

# Interpreting a Soil Sample

## Electrical Conductivity (EC):

- Measure of total salts recorded in deci-Seimens per meter (dS/m)
- Ideally <1.5 for average rootzone, too high reduces growth and production due to osmotic effects

## Saturation Percentage:

- Measure of soil-water content at saturation
- Helps characterize soil texture

SP%	Soil Type
<20%	Sandy Soils
20-35%	Sandy loam to loam
>35%	Silt or clay loam, clay

# Soil Amendments

## Soil pH

- Acidic Soils: Lime can raise pH, cheap source of calcium
- Alkaline Soils: Acid, sulfur (slow process)
- Often materials are applied heavily prior to modification to move to deeper depths

## Salinity

- Reclaiming ground is challenging and requires a lot of water
- Use calcium containing products to displace  $\text{Na}^+$
- Acidify the soil if dealing with alkaline situations

# Interpreting a Soil Sample - Nematodes

Extraction Method	Plant Parasitic Nematodes					Pin	*Soil Ecology	
	Root Knot	Stubby Root	Dagger Xiphenema americanum	Dagger Xiph. index	Ring		BF + FF	MI
SF	109	5	9		1,067	85	73	0.06
	188		15	3	1,041	134	129	0.10

## Plant Parasitic Nematodes:

- Ring, Lesion, and Rootknot nematodes are of primary concern
- Should be considered when determining soil fumigation needs
- If not listed, the nematode is not found

# Water Sampling

- Water should be sampled to determine suitability for almonds
  - Well and surface water
- Water sampling should occur at various times of the year
  - Wells should run 30 minutes prior to sampling
  - Install an EC meter, and resubmit when salinity changes by 20%



# Well Water Analysis: Interpretation

## Salinity Impacts:

- $EC_w > 1.5$  dS/m – growth can be impacted
- $SAR > 3$
- Chlorides  $> 5$  meq/L
- Boron  $> 0.5$  ppm

## Infiltration Issues:

- $SAR/ EC_w < 5.0$
- Ca:Mg  $< 2.0$
- Total salts
- pH: indicates if bicarbonate and carbonate ions

# Soil Modification



**Slip-Plow**



**Backhoe**



**Ripper**

# Soil Modification - Generalizations

	Ripping	Slip Plow	Backhoe
Strength	Shattering Hardpan	Mixing Layers	Mixing Layers
Cons	Doesn't Mix Layers – tend to reform	Expensive to break hardpans, settling, pulls up “bad stuff”	Expensive, settling
Areas of Use	Hardpan within the first 4 feet	Extensive fine and coarse layering, heavier soils	Area of layering, compaction, lighter soils

# Site Evaluation and Modification

## Concluding thoughts:

- Start early
- Best money spent in evaluating sites will prevent costly mistakes
- Soil salinity can reduce yields and kill trees, only sampling will reveal levels
- Any attempts to modify deeper soils should occur prior to planting



Thank you!

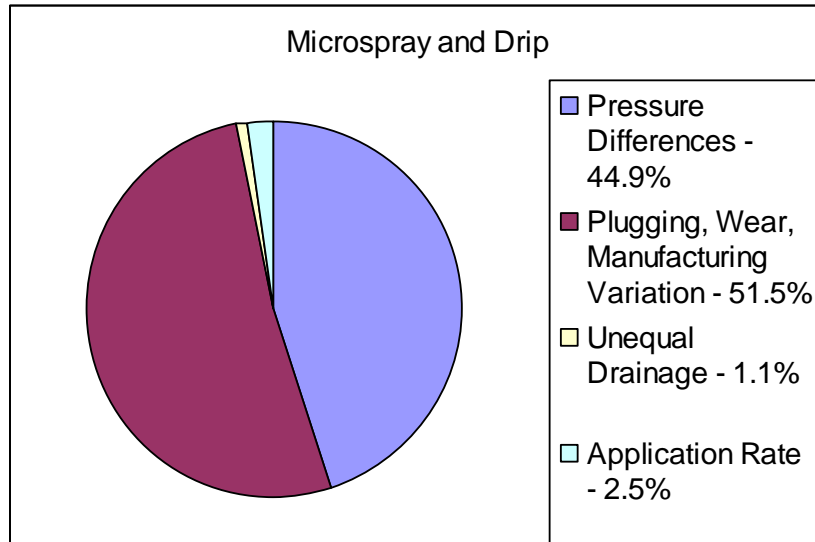
# COMMON ERRORS IN IRRIGATION DESIGN AND CONSTRUCTION

Dr. Franklin Gaudi  
Irrigation Training & Research Center (ITRC)  
at Cal Poly



# DRIP EVALUATIONS IDENTIFY PROBLEMS

- Student teams Evaluate fields each year
  - over 20 years worth of data
  - Major problem: Plugging and Pressure



## ERROR #1 – HOSE SCREEN WASHERS AT THE HEAD OF EACH HOSE

- THEY PLUG UP AND REDUCE THE PRESSURE TO THE ENTIRE HOSE
- Solution
  - BEST TO REMOVE THEM AND REPLACE WITH REGULAR HOSE SCREEN WASHERS



## ERROR #2 – LACK OF FLUSHING AT THE HOSE ENDS

- THIS PLUGS THE EMITTERS AND AFFECTS THE FLOW RATES TO THE TREES
- SOLUTION
  - BEST TO FLUSH AS OFTEN AS POSSIBLE



## ERROR #3 – FERTILIZER INJECTION DOWNSTREAM OF FILTERS

- The fertilizers may bond with other nutrients in the water and precipitate out, which plugs the emitters
- Solution
  - Best to inject upstream of the filters
    - Except for strong acids and pesticides



## ERROR #4 – DUAL LINE DRIP HOSES INSTALLED TO CLOSE TOGETHER

- This reduces the wetted area,  
which is the purpose of two drip lines
- Solution
  - keep the lines about 5-6 feet apart



## ERROR #5 – RUN TIMES OFTEN MISS THE MARK

- IRRIGATING BLOCKS FOR 48-72 HOURS WITH DRIP CAN BE PROBLEMATIC, COMPARED TO MICRO
- SOLUTION
  - BECAUSE THE WETTED AREA IS TYPICALLY SMALLER, IT IS BEST TO ROTATE MORE FREQUENTLY BETWEEN BLOCKS WITH A SHORTER DURATION





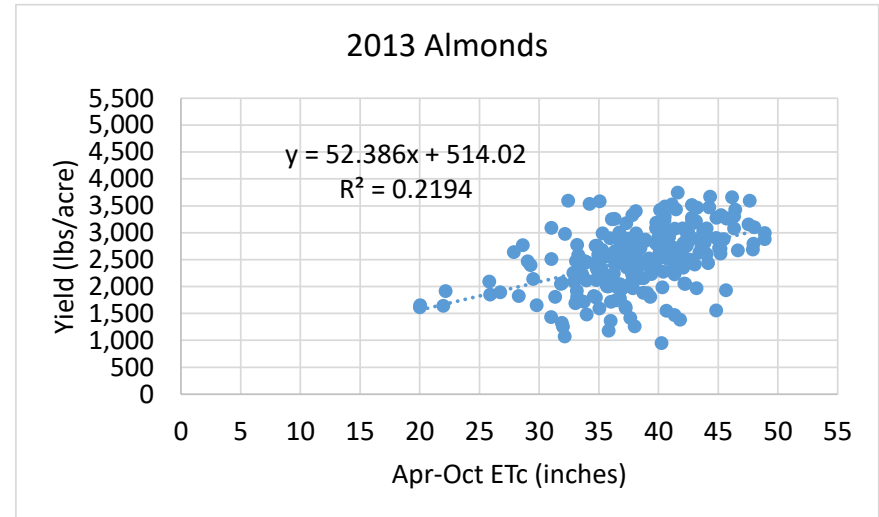
# ERROR #6 – UNDERSIZED EQUIPMENT

- OFTEN THE PUMPS ARE SIZED TO PROVIDE ADEQUATE FLOW AND PRESSURE, BUT ONLY WHEN NEW
- THE MAINLINES ARE GOING TO BE IN THE GROUND FOR 15-20 YEARS, SO CONSIDER THE ECONOMICS EARLY ON
- SOLUTION
  - INCREASE THE SIZE OF THE PUMP/MOTOR AND ADD A VDF
  - INCREASE PIPE SIZE



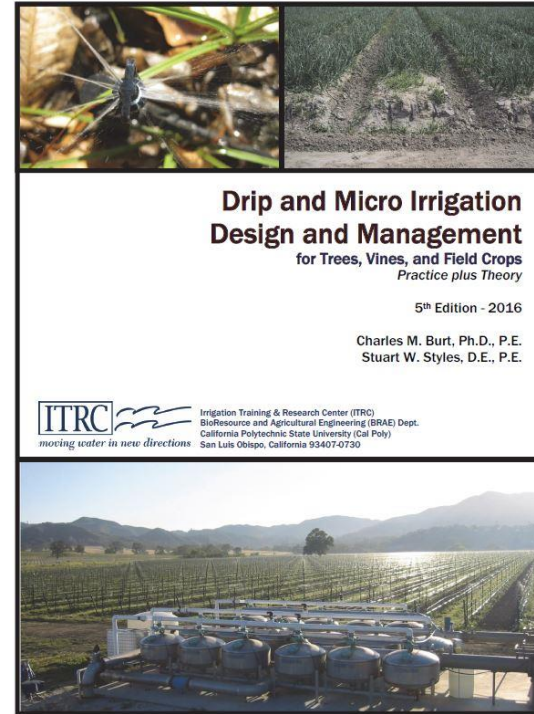
# ERROR #7 – NOT LEVELING THE PLAYING FIELD

- VARIATIONS IN NUTRIENTS AND SOIL TYPES CAN HAVE BIG IMPACTS ON YIELD
- SOLUTION
  - MAP THE SOILS AND NUTRIENTS IN THE FIELD AND DIFFERENT DEPTHS PRIOR TO PLANTING



# GET A RESOURCE

- ITRC WROTE THE BOOK ON DRIP AND MICRO IRRIGATION
- GET IT AT: [WWW.ITRC.ORG](http://WWW.ITRC.ORG)



Thank you!

# Common Errors in Orchard Setup - Rootstock Consideration

Roger Duncan  
UC Cooperative Extension  
Stanislaus County



**Goal:** Orchard that will quickly and uniformly fill in the space and capture maximum sunlight for as long as possible

**The best offense is a great defense**

# Think of the rootstock as your insurance policy

---



- Protect yourself from nonuniformity & early orchard decline



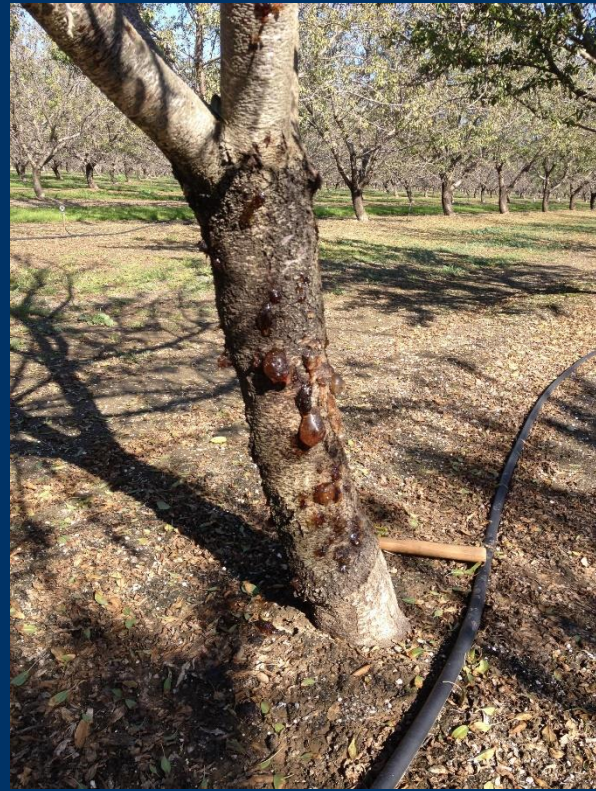
Lime induced chlorosis  
on Nemaguard



Much greener trees  
on Hansen P/A hybrid

# Severe zinc deficiency in old corral on Nemaguard





Defoliation and tree decline from excessive chloride  
– Carmel on Lovell Rootstock



Chloride toxicity  
on Padre:  
Lovell  
Rootstock

# Boron toxicity on Carmel: Lovell Rootstock



# Bacterial Canker



Nemaguard



Nickels Rootstock



Hansen Rootstock

# What is the best rootstock?

Rootstock choice should be site specific and based on the physical, chemical, and biological conditions in your field



# There are now many commercial rootstocks from which to choose

---

- Peach
- Peach hybrids
- Peach x Almond hybrids
- (Peach x almond) x (Peach x almond)
- Plum
- Peach x Plum
- Almond x Plum
- Complex hybrids (peach, almond, plum, apricot)

# Rootstock Influences Many Things

---

- Nematode tolerance
- Soil-borne disease tolerance
- Soil chemistry tolerance
- Replant disease
- Vigor
- Nutrition
- Bloom time
- Date of maturity
- Drought tolerance



# Rootstock Vigor

---

- **Peach / Almond hybrids** (Hansen, Bright's, Nickels, Titan, etc.),  
**Empyrean 1**
- **Interspecifics** (Viking, Atlas)
- **Peach** (Nemaguard, Lovell)
- **Plum** (Marianna 26-24)

**Most Vigorous**  
**(wide spacing)**

**Least Vigorous**  
**(close spacing)**



# Specific Challenges...

---

- Alkaline / salty soil or water
  - P/A hybrid (not if heavy, wet soil or if ring nematodes)
    - Hansen, Bright's 5, Cornerstone, Titan, BB106, F x A
  - Viking
  - Empyrean 1
  - Rootpac R (heavy soil, no ring nemas)



# Almond Rootstock Sensitivity to Toxic Salt Ions.

Keyes, CA July, 2014

	Levels of Toxic Ions in July-Sampled Leaves			
	Nonpareil		Carmel	
	% Sodium	% Chloride	% Sodium	% Chloride
Nemaguard	<b>0.88</b> a	0.27 bc	<b>1.19</b> a	0.26 a
Guardian	<b>0.66</b> ab	0.21 cd	<b>0.69</b> bcd	0.27 a
Lovell	<b>0.58</b> bc	0.28 bc	<b>0.75</b> bc	0.25 a
Atlas	<b>0.57</b> bc	0.16 de	<b>0.86</b> b	0.22 ab
Krymsk 86	<b>0.55</b> bc	<b>0.32</b> b		
Cadaman	<b>0.31</b> cd	0.23 c	<b>0.47</b> cde	0.24 ab
Penta	0.24 d	<b>0.50</b> a		
Viking	0.21 d	0.12 ef	<b>0.43</b> de	0.18 bc
Nickels	0.18 d	0.12 ef	<b>0.35</b> ef	0.15 cd
Paramount	0.11 d	0.08 f	0.07 f	0.07 e
Empyrean 1	0.11 d	0.07 f		
Hansen	0.11 d	0.09 ef	0.10 f	0.10 de
Empyrean 101	0.10 d	0.12 ef		
Cornerstone	0.06 d	0.07 f		
Julior			<b>0.37</b> ef	0.11 de
<b>Critical Level</b>	<b>0.25</b>	<b>0.3</b>	<b>0.25</b>	<b>0.3</b>

# Rootstock Effect on Chloride Accumulation in Leaf Tissue

CI critical level = 0.3%



	% CI	
Krymsk 86	0.89	a*
Lovell	0.72	b
Nemaguard	0.57	c
PAC9908-02	0.45	d
Atlas	0.42	de
Cadaman	0.38	def
Empyrean 1	0.33	ef
HBOK 50	0.31	ef
Viking	0.30	f
F x A	0.19	g
BB 106	0.19	g
Brights 5	0.18	g
GF 677	0.18	g
Rootpac R	0.17	g
HM2	0.16	g
Hansen	0.15	g

\*P ≤ 0.05

# Rootstock Effect on Boron Accumulation in Hull Tissue

B critical level = 300 ppm



	B (ppm)
Lovell	180 a*
Cadaman	170 ab
Atlas	158 ab
HBOK 50	158 ab
Nemaguard	153 bc
Krymsk 86	152 bc
Empyrean 1	133 cd
Rootpac R	132 cd
Hansen	126 de
GF 677	120 de
HM2	116 de
Viking	109 e
PAC9908-02	108 e
Brights 5	106 e
F x A	104 e
BB 106	102 e

\*P ≤ 0.05

# Specific Challenges...

---

- Phytophthora
  - Marianna 26-24
  - Krymsk 86
  - Marianna 40
  - Rootpac R



# Specific Challenges...

---

- Poor drainage / heavy soil
  - Marianna 26-24
  - Krymsk 86
  - Marianna 40?
  - Rootpac R?



# Specific Challenges...

---

- Anchorage / high wind
  - Krymsk 86
  - Viking
  - Hansen



# Specific Challenges...

---

- Armillaria (Oak Root Fungus)
  - Marianna 26-24
  - Krymsk 86



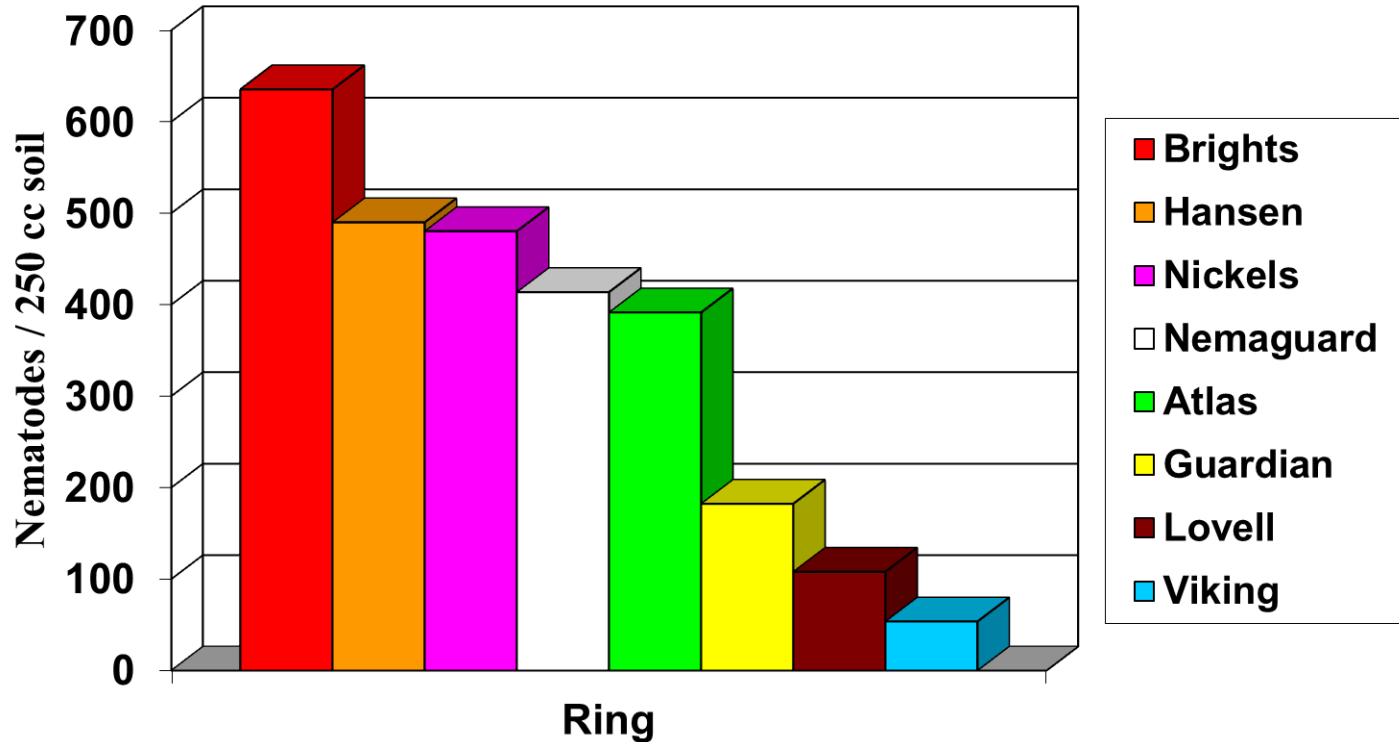
# Specific Challenges...

---

- Bacterial Canker / Ring Nematodes
  - Viking
  - Guardian
  - Lovell

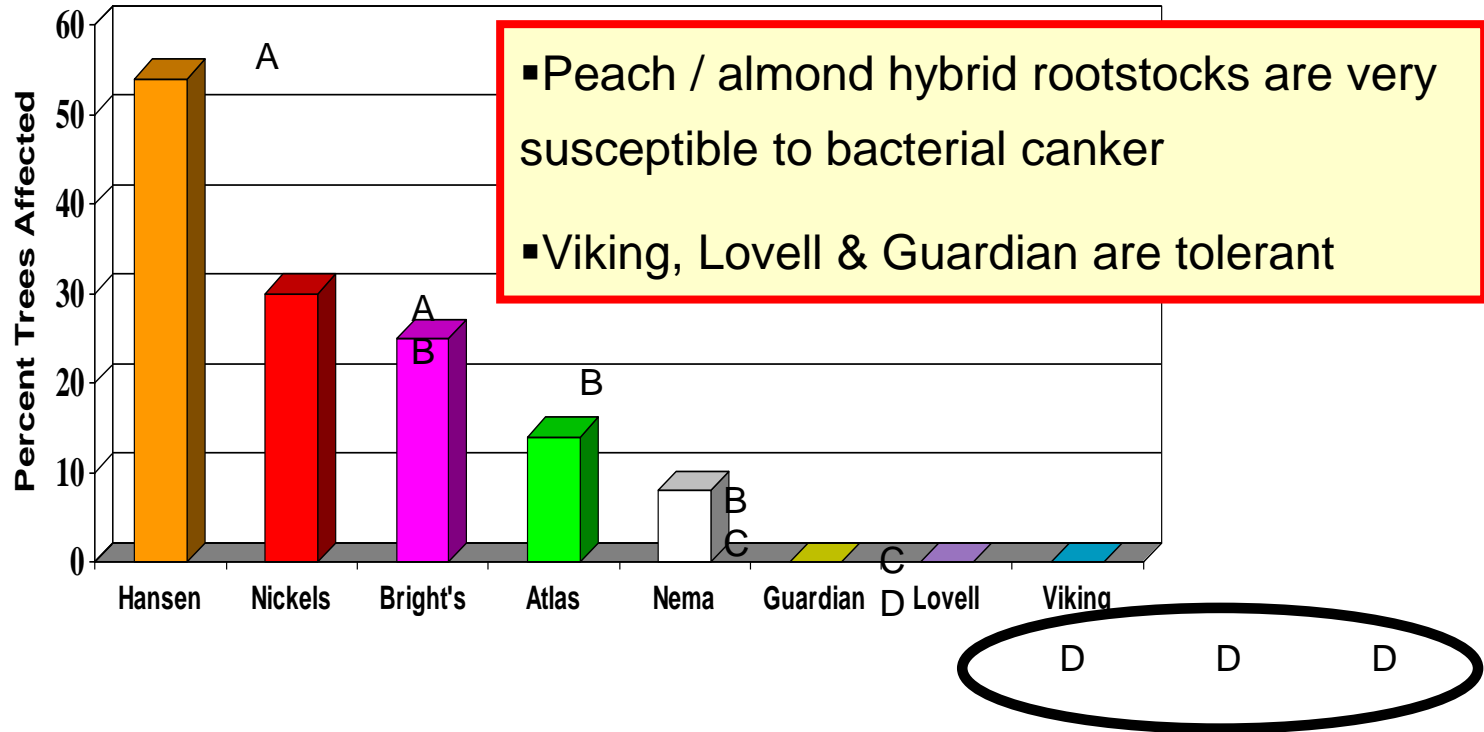


# Soil Numbers of Ring Nematodes as Influenced by Almond Rootstock Escalon, CA.



# A Comparison of Almond Rootstocks for Incidence of Bacterial Canker

Escalon, CA (8<sup>th</sup> leaf)



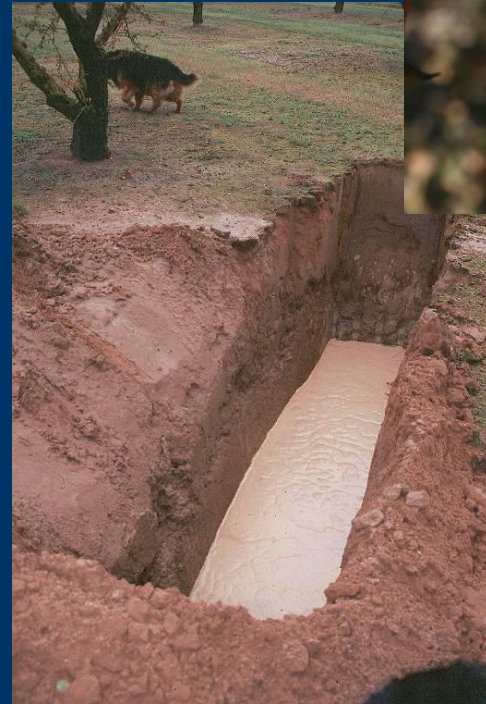
# Specific Challenges...

---

- High Water Table

Often double whammy due to salt build up

- Rootpac R?
- Viking, Emphyrean 1, P/A hybrid??
- Krymsk 86 very susceptible to salt injury
- Corn & oats??



Think about what specific challenges your ground may have and select the appropriate rootstock.

**Thank you for your  
attention**

Thank you!



# What's Next

## Tuesday, December 5 at 3:00 p.m.

- How to Manage a Young Orchard – Room 308-309
- Come See What's Happening in D.C.! – Room 306-307
- Research Update: Soil Health, Aerial Almond Mapping and Almond Lifecycle Assessment – Room 312-313
- Technology in the Food Safety World: Tools Such as Whole Genome Sequencing – Friend or Foe? – Room 314

# Research Poster Sessions

## **Wednesday, December 6**

*3:00 p.m. – 5:00 p.m.*

Featured topics:

- Irrigation, nutrient management
- Breeding
- Soils, if related to organic matter input
- Sustainability, irrigation improvement continuum, life cycle assessment, dust
- Food quality and safety

## **Thursday, December 7**

*1:30 p.m. – 2:30 p.m.*

Featured topics:

- Insect and disease management
- Fumigation and alternatives
- Biomass (including biochar-related efforts)
- Pollination
- Almond Leadership Program

# 2017 Research Update Book

- Pickup your copy at the ABC Booth in Hall A+B
- Includes a one-page summary of every current ABC-funded research project

